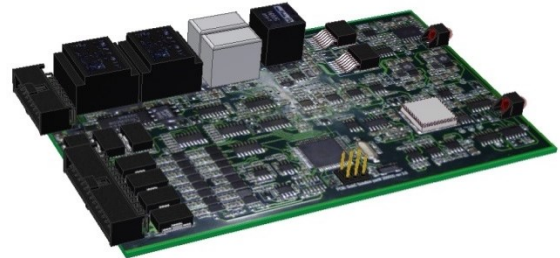


SUBSEA MODEM AND I/O CONTROLLER

Combined transparent power line modem and subsea controller ideal for control systems and can be used in coexistence with other control systems.

The controller has switched 24V outputs and 4-20mA current loop inputs. Modem has transparent RS-232 and RS-485 connection for communications with 3. party sensors and equipment.

In addition to power line modems, qualified fiber optic modems and DSL modems with high speed Ethernet communication are also available.



SUBSEA ACTUATOR CONTROLLER

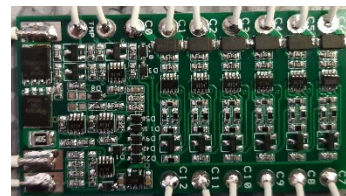
Controller board for electrical subsea actuators with fail safe functionality. Compact design with motor control, battery charging system and monitoring.

Modbus ethernet and serial main communication. Optional CANbus, digital ON/OFF or 4-20mA actuator control.



BATTERY MANAGEMENT SYSTEM

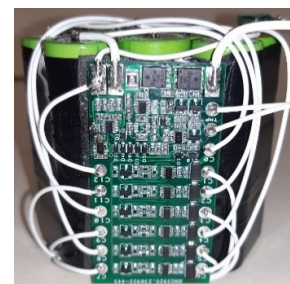
Proprietary BMS card for battery packs. Designed and qualified to API-17F. Is mounted directly to subsea battery packs.



SUBSEA BATTERY PACK

24V / 48V Li-Ion battery packs for use in subsea atmospheric enclosure. Delivered with battery management system. Designed in accordance with API-17F requirements.

Other sizes available on request.



SUPER-CAPACITOR UNIT

24V or 48V subsea capacitor battery as an alternative to Li-Ion batteries for subsea use. Capacitor banks can be stacked to increase energy storage.

Designed in accordance with API-17F requirements.



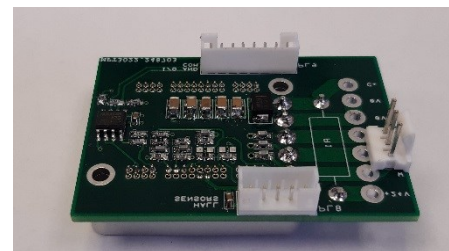
POWER AND FILTER UNITS

SubC Solutions has developed and qualified a range of power supplies, filters, transformers, and power switches to be used in conjunction with subsea control and monitoring system. System design ensures easy reconfiguration to meet system requirements. Designed in accordance with API-17F requirements.



BRUSHLESS DC MOTOR CONTROLLER

BLDC control and driver module for subsea pumps, actuators and other equipment with motors. Compact and rugged design with high motor current capacity. 24V DC supply voltage. Interface for motor HALL sensors or rotational encoded. Configurable for stand-alone operation on remote control using RS-485, Ethernet or CANbus communication.



ELECTRICAL PENETRATORS

Glass sealed electrical penetrator developed for subsea applications. Main data include:

- 300 Barg working pressure
- Rated to 600V DC / 12A
- Rated to +70 to -20 Deg C

