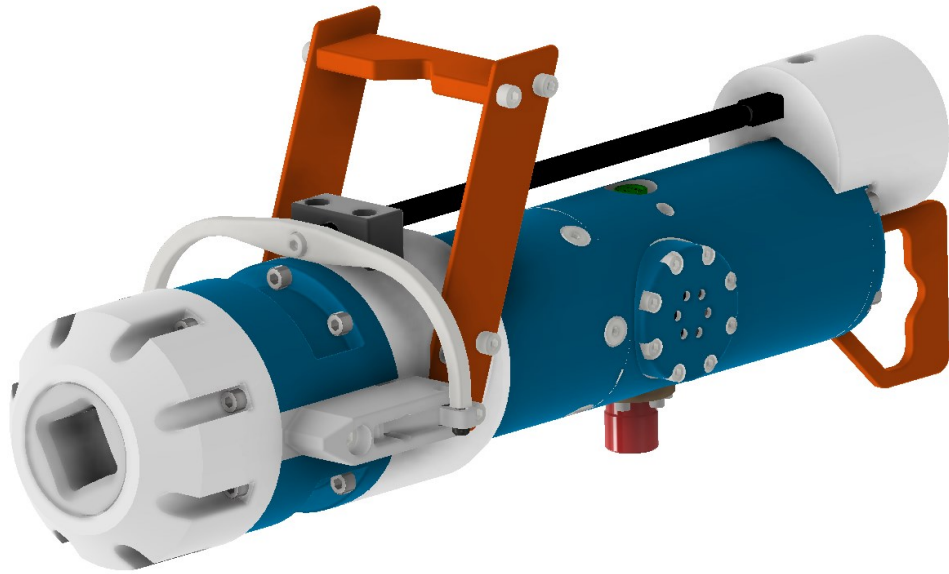


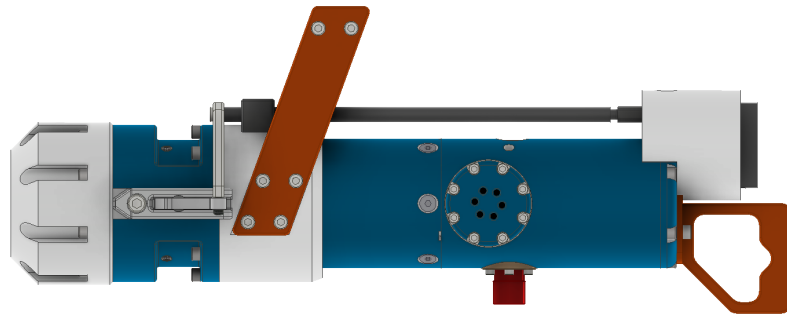
SUBSEA ELECTRICAL VALVE ACTUATOR ROV 230NM



Key Features

Robust Design	Designed for long lifetime. Compact size and low weight. API-6A PR 2 qualified and all electronics qualified to API-17F.
ROV Installable	API-17H (ISO 13628-8) class I-IV ROV interface. Interface class type/size can be easily be changed without re-testing and verification.
Flexible Configuration	User configurable speed, acceleration, torque and end positions. Configurable as multiturn, quarter turn or user defined. Manual and auto homing with retained positions after power down.
Failsafe Functionality	Configurable failsafe operation on loss of power and/or communication. <ul style="list-style-type: none"> - Fail safe close - Fail safe open - Fail as is - Fail to configured position
Low Power Consumption	Battery delivers power boost during valve operation and is trickle charged between valve operations, reducing maximum external supply power demand.
Battery Pack	Battery pack for fail safe functionality. Option without battery and shorter actuator length available on request. Super capacitor option available on request.

SUBSEA ELECTRICAL VALVE ACTUATOR ROV 230NM



Technical Data

Operational Depth	3000 m
Temperature Rating	Operational: -5 to +40 °C Storage: -18 to +50 °C Electronics qualification: -18 to +70 °C
Output Speed	Configurable: 0-2 RPM
Valve Configuration	Configurable as: Quarter turn, multiturn or step
Operational torque	0-230Nm nominal torque range 285Nm maximum torque
Peak torque	Configurable maximum peak torque up to 285Nm. EVA operation on low torque valves possible with reduced peak torque limit setting to avoid over torque
Holding torque	25Nm (no power applied) Configurable 25-230Nm when powered
Dimensions (W x H x L)	254 x 280 x 712 mm (including rear handle)
Weight	27 kg (Titanium grade 5, dry weight) 42 kg (Stainless steel, dry weight)
Valve Interface	ISO 13628-8 ROV Class I -IV
Communication Interfaces	- SIIS Level 1(4-20mA) - SIIS Level 2 (CANbus) - SIIS Level 3 (Ethernet, Modbus TCP) - RS-232 and RS-485, Modbus RTU
Input Voltage	12 - 30V DC
Battery	Li-ion: 48V / 2Ah or 24V / 4Ah Super Capacitor battery available on request
Power Consumption	1W standby, no holding current applied (configurable) Up to 24W maximum (when charging, configurable)
Connector	7 Pins Gisma S10 drymate Others dry-mate and wet-mate available on request

SUBSEA ELECTRICAL VALVE ACTUATOR ROV 230NM

Configurable Parameters	User configurable actuator main parameters: <ul style="list-style-type: none"> - Rotational speed - Acceleration / Deacceleration - Maximum torque limit - Direction - End positions - Fail safe operation
Other features	Auto or manual homing functionality to configure end-positions. Actuator position and all configuration parameters is retained on power loss.
Monitoring	Position, valve profile and housekeeping data such as voltages, temperature and battery status. Alarm triggered if valve operation fails to complete.
Applicable design codes and guidelines	API-6A / ISO 10423 API-17H / ISO 13628-8 API-17F / ISO 13628-6
Qualification	API-17F: Q1 and Hyperbaric test. API- 6A: PR2, Endurance test, Long lifetime test (2600 cycles with valve load)

Dimensional

